

NEWSLETTER

Updates of the Week

5th December 2024



**THE MEGHALAYA LIVELIHOODS AND ACCESS TO
MARKETS PROJECT (MEGHA-LAMP)**



**THE MEGHALAYA LIVELIHOOD IMPROVEMENT
THROUGH FOREST ENHANCEMENT PROJECT (MEGLIFE)**



**PROTECTION OF VULNERABLE CATCHMENT AREAS IN
MEGHALAYA**



SUSTAINABLE LAND MANAGEMENT, MEGHALAYA



INSTITUTE OF NATURAL RESOURCES (INR)



**FARMERS' COLLECTIVIZATION FOR UPSCALING OF
PRODUCTION AND MARKETING SYSTEMS (FOCUS)**



**THE MEGHALAYA BASIN MANAGEMENT AGENCY
(MBMA)**



**THE MEGHALAYA BASIN DEVELOPMENT AUTHORITY
(MBDA)**

MEGHALAYA LIVELIHOODS AND ACCESS TO MARKET PROJECT



INRM * RF * ISC&ED

Megha **LAMP**
Meghalaya Livelihoods Access to Market Project
In Partnership With IFAD

MEGHALAYA LIVELIHOODS AND ACCESS TO MARKET PROJECT

MBMA holds Programme to Celebrate Community Contributions to Development and Livelihoods

29 November 2024, Shillong – A programme celebrating the communities of Meghalaya for their efforts toward community-driven progress and livelihood improvement was held on the 29th November 2024 at the State Convention Centre in Shillong. Named Community Talks, the event, now in its second edition, was organized by the Meghalaya Basin Management Agency (MBMA) as part of initiatives of the Meghalaya Livelihoods and Access to Markets Project (Megha-LAMP).

A total of 12 communities and individuals from across the State were felicitated during the event, where they shared their experiences and practical knowledge on topics such as traditional farming practices, women empowerment, farmer collectivization, entrepreneurship, financial inclusion, and community organization.

Speaking at the event, Shri Gunanka D.B., IFS, Joint Secretary to the Government of Meghalaya and Executive Director of the Meghalaya Basin Development Authority (MBDA), emphasized that the programme is centered on the communities of Meghalaya. He highlighted the importance of collaboration, noting that developmental initiatives cannot be sustained without the active involvement of communities. He pointed out that most MBMA and MBDA projects are community led, with challenges identified by the people and solutions developed collaboratively. This approach ensures that successes are the result of the communities' own efforts.

Nirajan Khadka from IFAD highlighted the significance of learning and knowledge exchange, emphasizing the role of community gatherings as platforms for collaboration and shared progress. He reaffirmed IFAD's commitment to empowering farmers and advancing rural development, particularly by supporting smallholders, marginalized groups, and inclusive growth.

The event saw the participation of over 300 community members from across the State, officials from various state government departments and representatives of development agencies.



MEGHALAYA LIVELIHOODS AND ACCESS TO MARKET PROJECT

MBMA holds Programme to Celebrate Community Contributions to Development and Livelihoods



Scan in QR Code to watch Program highlights

MEGHALAYA LIVELIHOODS AND ACCESS TO MARKET PROJECT

Highlights of Workshops & Meetings



The District Project Management Unit organized a Multi-Stakeholder Platform (MSP) programme on the 27th to 29th November 2024 under Kharkutta Block, North Garo Hills, at the cluster level for Producer Groups from Chibongga, Baksalpara, and Adokgre clusters. The platform aimed to follow up on production activities, support funds, repayment statuses, and to mobilize share contributions and regular savings for IVCS.

A meeting was held with the Block Development Officer (BDO) and the DPMU team of North Garo Hills to discuss various initiatives. Key topics included coordinating livestock training with the Veterinary Department, ensuring insurance and vaccination coverage, leveraging funds from MGNREGA for pigsty construction, INRM planning, and establishing small food processing units for Producer Groups.



Highlights of Training



A **Five Day Residential Training on Cashew Value Addition** was conducted from **25th to 29th November 2024** at Rongram Prime Hub, West Garo Hills. The programme was jointly organized by MBMA and the Directorate of Horticulture, Government of Meghalaya, in collaboration with the All Garo Hills Multipurpose Cooperative Society (AGHMPCS). Dr. Bala Subramanian, Principal Scientist from ICAR-DCR Puttur, Karnataka, served as the resource person for the training.



MegLIFE

Meghalaya Livelihood
Improvement through Forest
Enhancement Project (MegLIFE)



MEGHALAYA LIVELIHOOD IMPROVEMENT THROUGH FOREST ENHANCEMENT PROJECT

Mela Payment activity conducted



A Payment Mela was organized across various blocks, including Baghmara, Saipung, Kharkutta and Resubelpara, with the aim of streamlining financial processes and supporting local development initiatives. This initiative prioritized transparency and accuracy in financial record-keeping through a meticulous review of the books of accounts. By conducting this comprehensive review and payment procedure, the event underscored the district's commitment to effective financial management and the success of community-driven projects.

2024 Nursery Site Visit



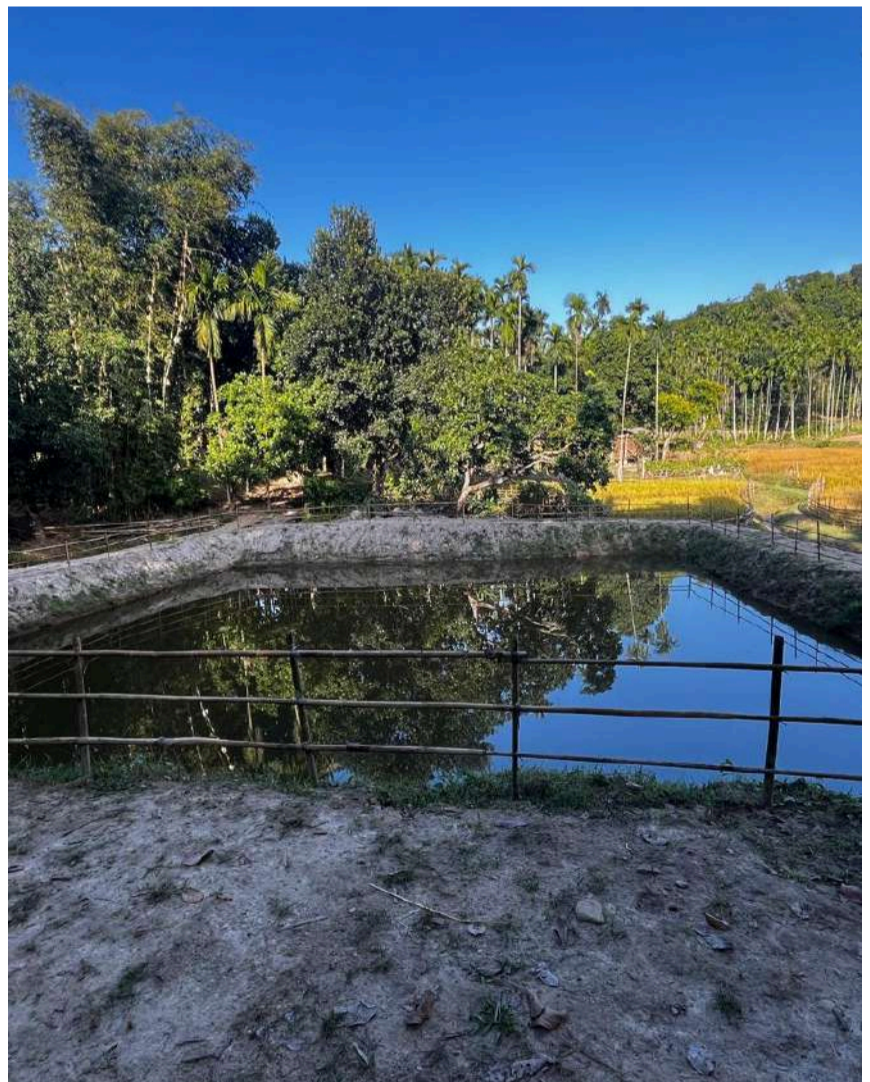
On November 25, 2024, Sir Dr. Ravishankar Thupalli, PMC from the SPMU Office, visited Nongsangu and Mawteinar VPIC for a site inspection. The visit focused on the community nursery and plantation area established in 2024 under the BPMU Umsning initiative. This visit has been greatly valued, inspiring the team to strengthen their commitment to sustainable development and environmental conservation.

MEGHALAYA LIVELIHOOD IMPROVEMENT THROUGH FOREST ENHANCEMENT PROJECT

EPA and SWC activity



The ongoing feasibility assessment of EPA and SWC structures in the Kharkutta Block.



On November 28, 2024, the District Project Manager (DPM) visited the spring-tapped chamber site under Malchapara VPIC in Betasing Block. This chamber, which will supply drinking water, is set to benefit 15 households. The DPM also assessed the progress of the dugout pond construction within the same VPIC.

MEGHALAYA LIVELIHOOD IMPROVEMENT THROUGH FOREST ENHANCEMENT PROJECT

Monitoring Visit to Madansynrang Village for MegLIFE Project



On 29th November 2024, a team from the Project Management Consultant (PMC), led by Sir Ravi Shankar Thupalli, along with the Field Coordinator and Block Project Management Unit (BPMU) team, conducted a scheduled monitoring visit to Madansynrang village in the Thadlaskein Block as part of the MegLIFE project. The team engaged with the Village Project Implementation Committee (VPIC) to review various activities, including the establishment of a Village Forest Committee that now allows locals to source timber sustainably. The visit also highlighted potential livelihood interventions, such as training for income-generating activities, the preservation of traditional healing knowledge, and the success of local plantation efforts, though some practices like ring clearance size needed optimization. The visit underscored the importance of collaboration for the village's continued development.

GREEN⁺

MEGHALAYA

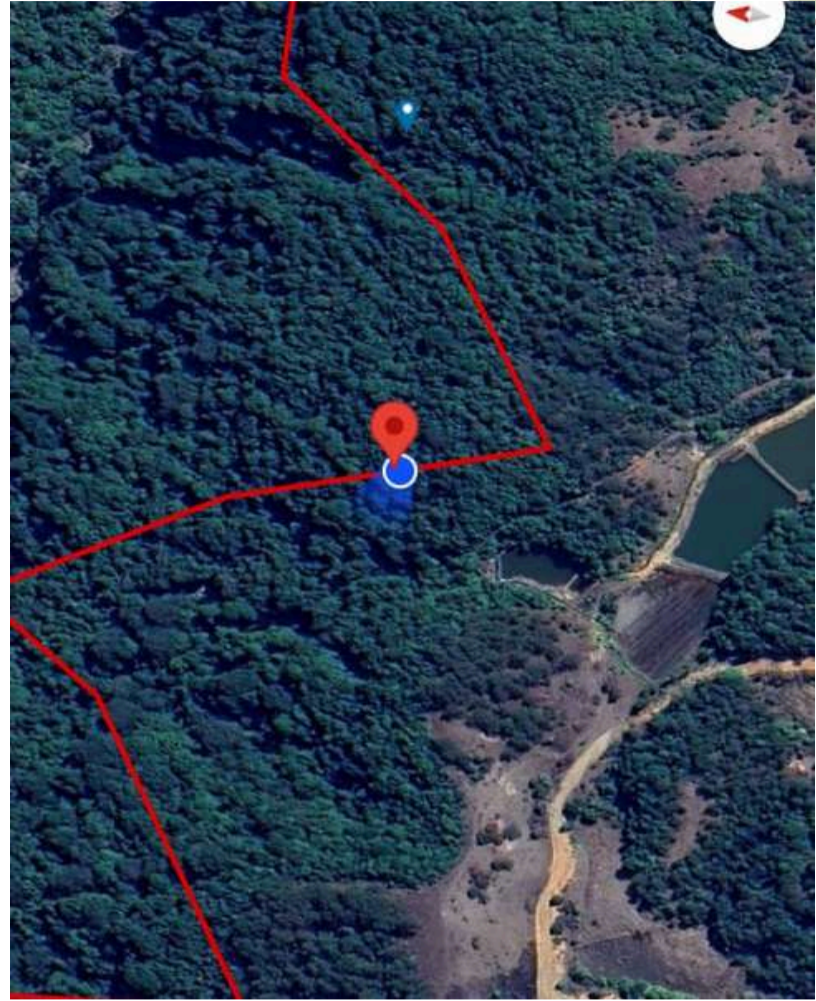
Grassroot Level Response towards
Ecosystem Enhancement and
Nurturing Meghalaya

Payment for Ecosystem Services (PES)



PAYMENT FOR ECOSYSTEM SERVICES

MRV activities conducted by the GFAS



The MRV (Monitoring, Reporting, and Verification) activity was conducted across various blocks and villages, covering a wide geographical area that includes Bollongre A.ga in Selsella Block, Mongalgre in Rongram Block, Moolasngi in Saipung Block, Iapmala in Khliehriat Block, Khliehmawlieh in Mawshyrut Block, and Amlamet in Amlarem Block. Other notable villages included Sohryngkham in Mawryngkneng Block, Kitmadamgre in Bajengdoba Block, longkaluh in Khliehriat Block, Mawmang in Khatarshnong Laitkroh Block, Rangphlang in Mawkynew Block, Pdengkseh in Amlarem Block, Mawkyllei in Mawthadraishan Block, Nongblai in Pynursla Block, Bolbokgre in Demdema Block, Laitmawroh in Khatarshnong-Laitkroh Block, and Andalsikgre in Tikrikilla Block. Additionally, Skagre in Betasing Block, Rongdolgre in Songsak Block, Naringgre Dombu Gittim in Damborongjeng Block, Wahlyngkhat, and Nongmadan Shadsngi in Pynursla Block, Rashai in Khliehriat Block, Upper Rongdotchi in Baghmara Block, Bolchu Adingre in Tikrikilla Block, Chibonggre in Dadenggre Block, Lumskhen in Khliehriat Block, Reni Badimagre in Chokpot, Damalgre in Selsella Block, Naringgre Tesok Gittim in Dambo Rongjeng Block, Umsham in Umling Block, Jakhong in Mairang Block, Lamin in Amlarem Block, Mawkisyiem, Pomsahmen, and Nongrim in Shella Bholaganj Block, Mawrah in Khatarshnong Laitkroh Block, Silsekgre in Rongram Block, Daram Mangthu in Resubelpara Block, and Lelad in Saipung Block were also covered, showcasing an extensive effort to engage diverse communities across multiple regions.

SUSTAINABLE LAND MANAGEMENT, MEGHALAYA (SLM)



SUSTAINABLE LAND MANAGEMENT, MEGHALAYA



Staff Meeting at SLM Conference Hall

A staff meeting was held on **December 3rd, 2024**, at the SLM Conference Hall. The agenda included **onboarding NGOs, signing MoUs, conducting financial training, and discussing upcoming block-level positions** to be filled.

Knowledge Management
knowledge.mbda@gmail.com

FOLLOW US ON

